




1106/242 Elizabeth St, Surry Hills, NSW 2010

\$795,000

Apartment 1  1  1 

First Time Offer In 12 Years - Priced To Sell

Be impressed by this excellent size one bedroom apartment which comes with a secure car space and full furnished package.

Located in the prestigious "Excelsior Apartments" building on the fringe of the CBD

Unit area 74 sqm + 14 sqm car space. Huge balcony (18 sqm) fitted with shutter. High on 11/F overlooking to Central Station. Plenty of storages. Gourmet kitchen with gas stove, electric oven and dishwasher. Floating floor board.

Other features:

- * Intercom entry with access control
- * Building Manager on site
- * Resort style facilities, indoor heated Pool, Spa, Sauna and Gym
- * Ultra convenient inner-city location with bus at doorstep. Central station is only couple of hundred meters away
- * Close proximity to boutiques, cafes, bars, restaurants, Hyde Park and the CBD.

Outgoings :

Strata Admin Fund \$1,336 p.q. (approx.)

Strata Capital Work Fund \$ 886 p.q. (approx.)

Council Rates \$ 180 p.q. (approx.)

Water Rates \$ 179 p.q. (approx.)

Open for Inspection

By Appointment.

Listed By

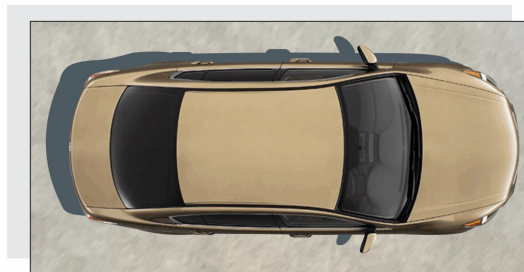
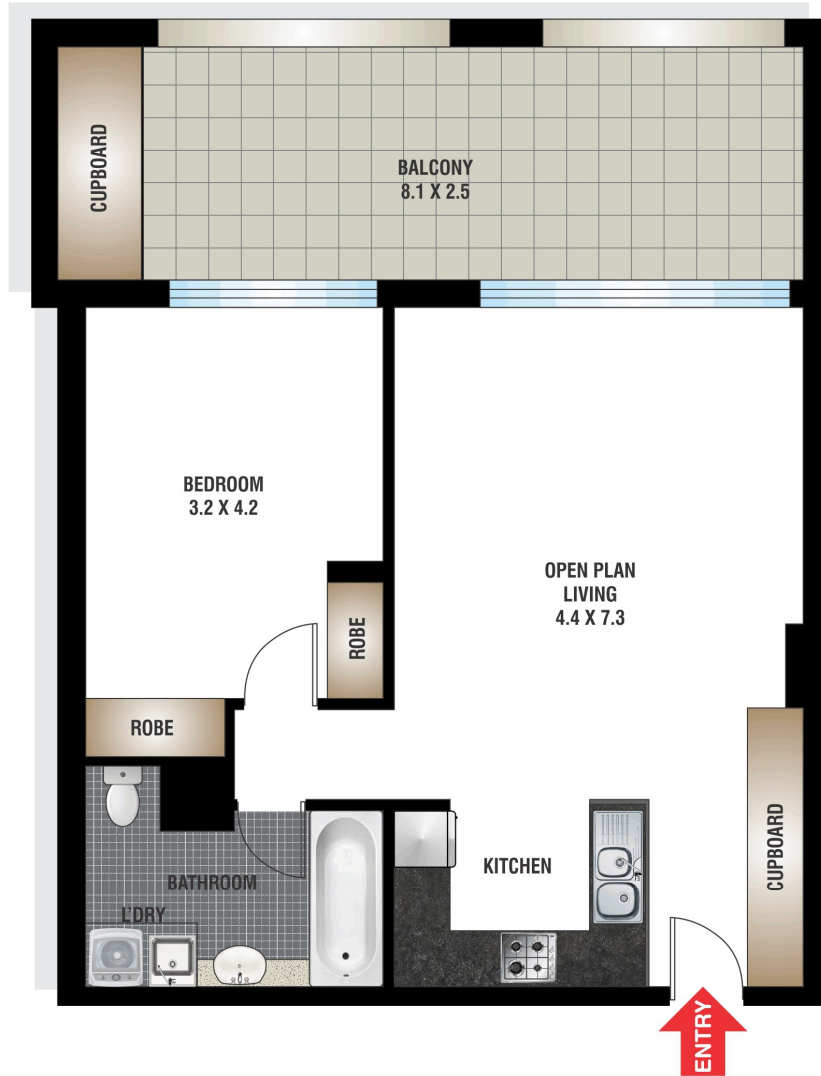


Steven Cheung
Phone: (02) 9281 2383
Mobile: 0411 848 332



Floorplan

1106/242 Elizabeth Street
SURRY HILLS



FLOOR PLAN BY BORTEX PTY LTD PH: 0414 922 679

"The information contained herein has been provided by our Principal and third parties, which we merely pass on without any representation or warranty given, intended or implied by us as to its correctness and with no liability accepted by us in this regard. You must rely on your own inquiries as to its accuracy or otherwise."